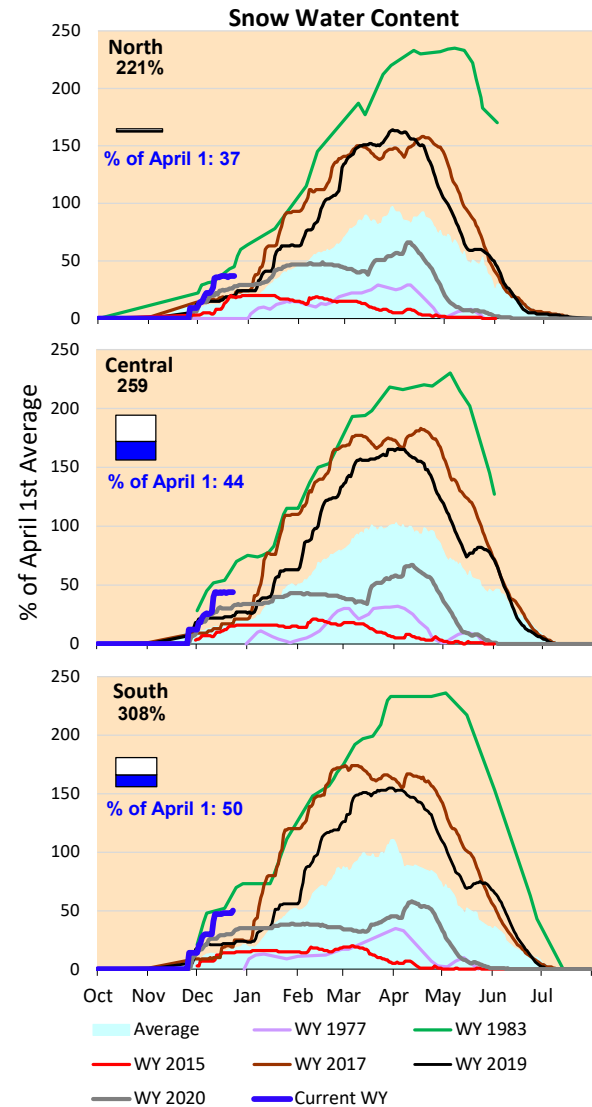
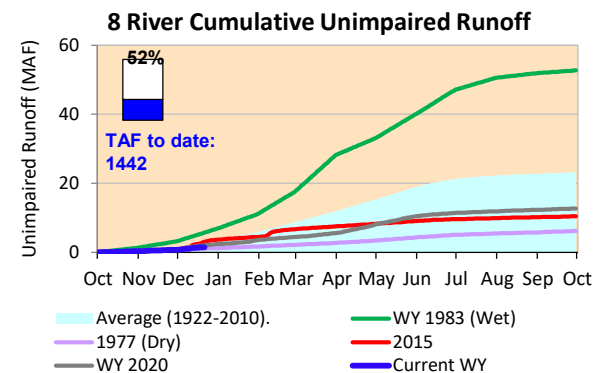
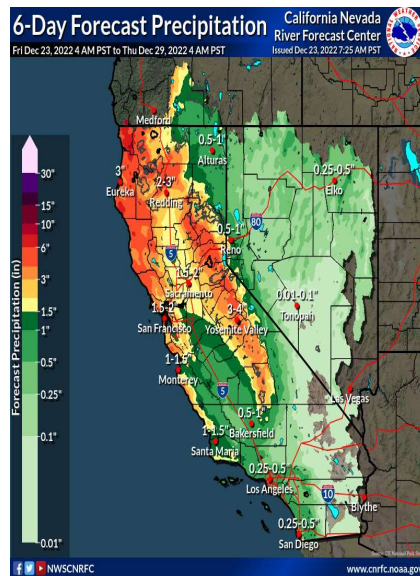


Some strong storms forecasted for Northern and Central California through end of December. Cumulative precipitation for the Sierras are similar to average value for this time of year. The snow water content is above the average values for this time of year. Actual runoff is similar to the historical average rates, close to conditions experienced in 2020.

*Note: Percentages in each plot refers to percent of average for this date. When historic data is unavailable, Snow Water Content Bar plot is not shown. The percent of historic average for each SWC location differs slightly from CDEC's report due to small discrepancies in historical data.

6-Day Forecast Precipitation (inches)





Project Operations



12/23/2022

Delta outflow conditions remain 'balanced'. Delta outflows, and SAC and SJR inflows have reduced as compared to last week. Salinity conditions in the South Delta improved last week allowing increased SWP and CVP exports. Shasta, Oroville and Folsom Reservoir storage amounts are significantly below average levels for this time of year. All storage volumes increased from last week. Note: Yesterday's X-2 Position is estimated.

