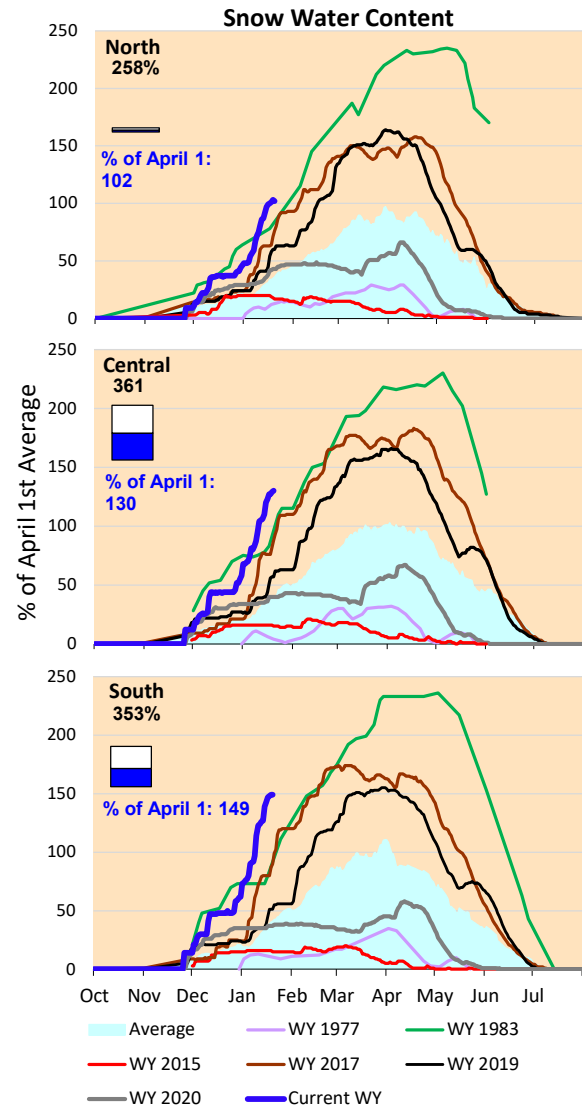
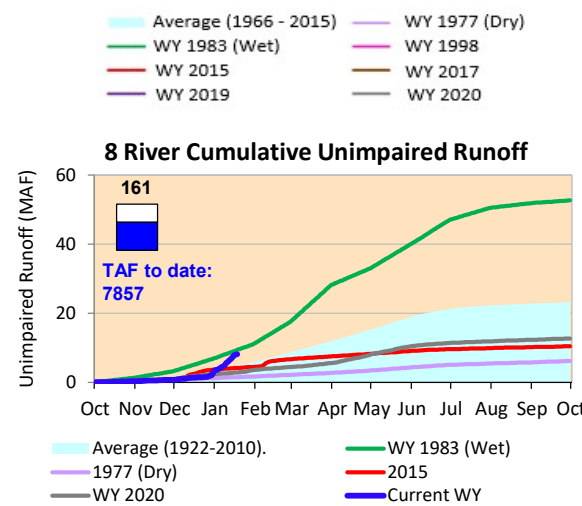
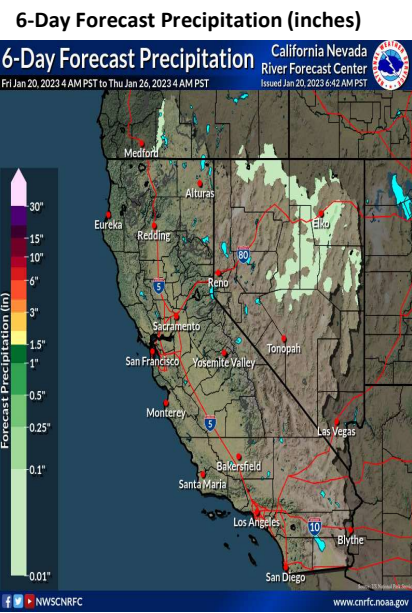


No significant precipitation is forecasted for the California for the next week. Cumulative precipitation for the Sierras and snow water content are well above the average values for this time of year. Actual runoff is higher than the historical average rates, close to conditions experienced in 1983.

*Note: Percentages in each plot refers to percent of average for this date. When historic data is unavailable, Snow Water Content Bar plot is not shown. The percent of historic average for each SWC location differs slightly from CDEC's report due to small discrepancies in historical data.





Project Operations



1/20/2023

Delta outflow conditions changed to 'excess Delta conditions'. Delta outflows and SAC inflows have decreased, with an increase in SJR inflows as compared to last week. CVP and SWP export are higher than last week's amounts. Salinity conditions in the South Delta have remained good last week allowing increased SWP and CVP exports. While Shasta Reservoir storage remains well below average, Oroville Reservoir storage amounts are close to average levels for this time of year. The storage at Folsom is at the historic average level. All storage volumes increased from last week.

