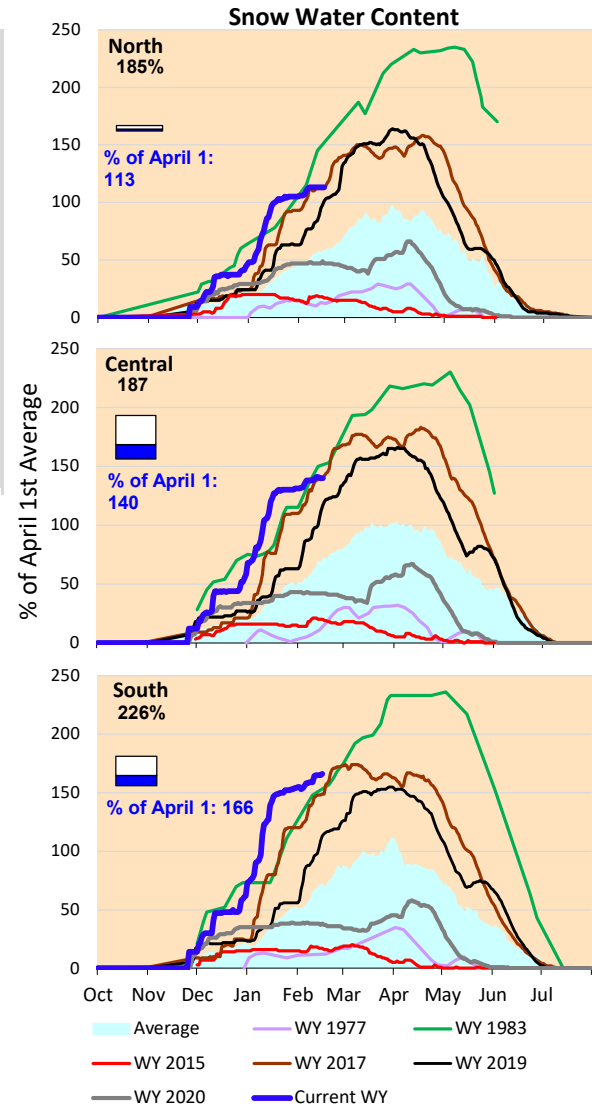
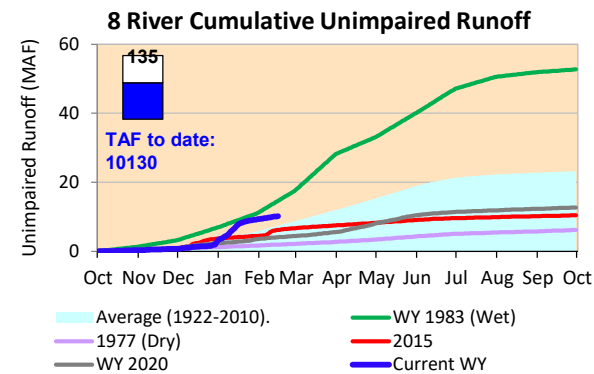
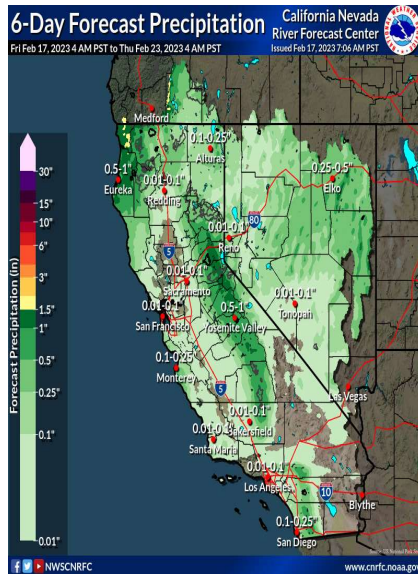


Small amounts of precipitation are forecasted for California next week. Cumulative precipitation and snow water content for the Sierras are above average values for this time of year. For the South areas, snow water content is above wet year (1983) for this time of year. Actual runoff is higher than the historical average rates.

*Note: Percentages in each plot refers to percent of average for this date. When historic data is unavailable, Snow Water Content Bar plot is not shown. The percent of historic average for each SWC location differs slightly from CDEC's report due to small discrepancies in historical data.

6-Day Forecast Precipitation (inches)





Project Operations



2/17/2023

Delta outflow conditions continue to remain in excess with restrictions. Delta outflows and SAC and SJR inflows have decreased as compared to last week. CVP SWP exports are lower than the last week's amounts. Shasta reservoir storage amounts is close to average levels for this time of year. Storage at Folsom and Oroville Reservoirs are near the historic average level. All storage volumes increased from last week.

