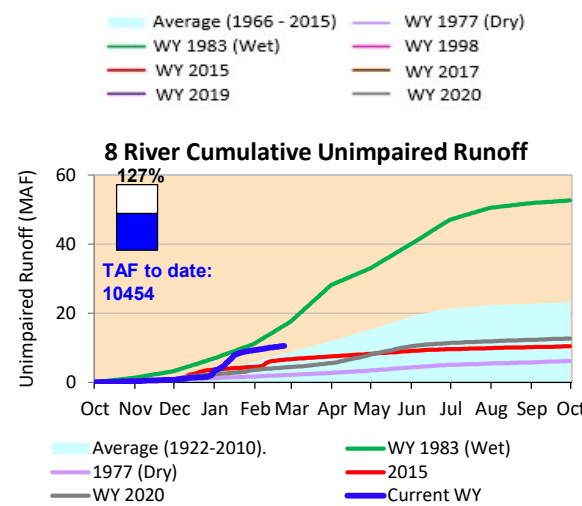
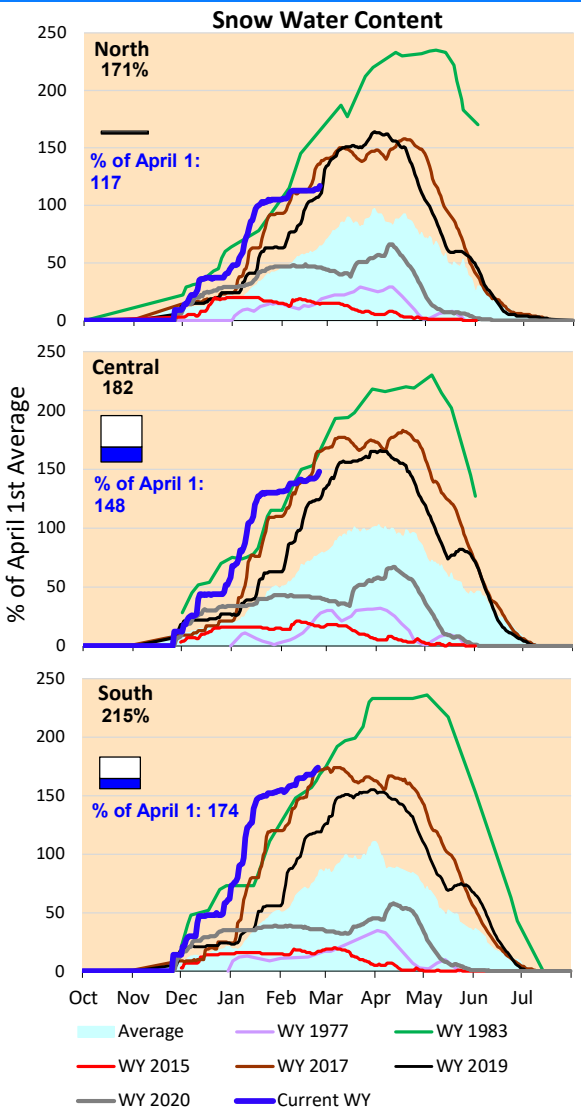
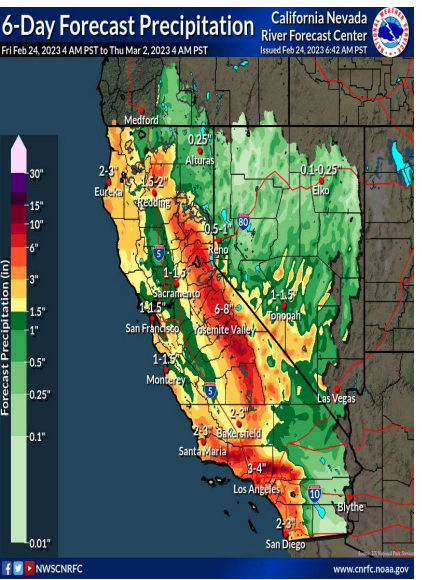


Some strong storms forecasted for California through next week. Cumulative precipitation for the Sierras are above average value for this time of year. The snow water content is above the average values for this time of year. For the South area, snow water content is above wet year (1983) for this time of year. Actual runoff is higher than the historical average rates.

\*Note: Percentages in each plot refers to percent of average for this date. When historic data is unavailable, Snow Water Content Bar plot is not shown. The percent of historic average for each SWC location differs slightly from CDEC's report due to small discrepancies in historical data.



### 6-Day Forecast Precipitation (inches)



Delta outflow conditions continue to remain 'excess Delta conditions with restrictions'. Delta outflows and SAC and SJR inflows have decreased as compared to last week. CVP SWP exports are lower than the last week's amounts. Salinity conditions in the South Delta have remained low and have not restricted exports. Shasta and Folsom reservoir storage amounts are below average levels for this time of year. Storage level at Oroville are at the historic average level. All storage volumes increased from last week.

