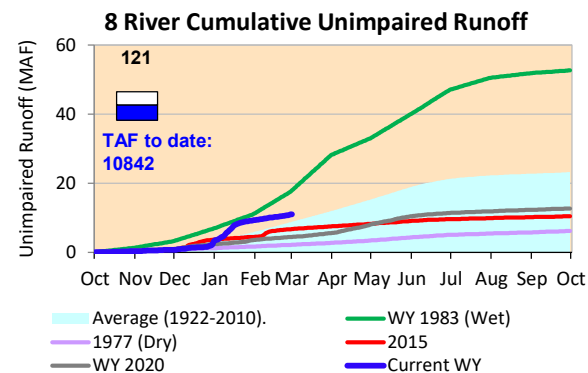
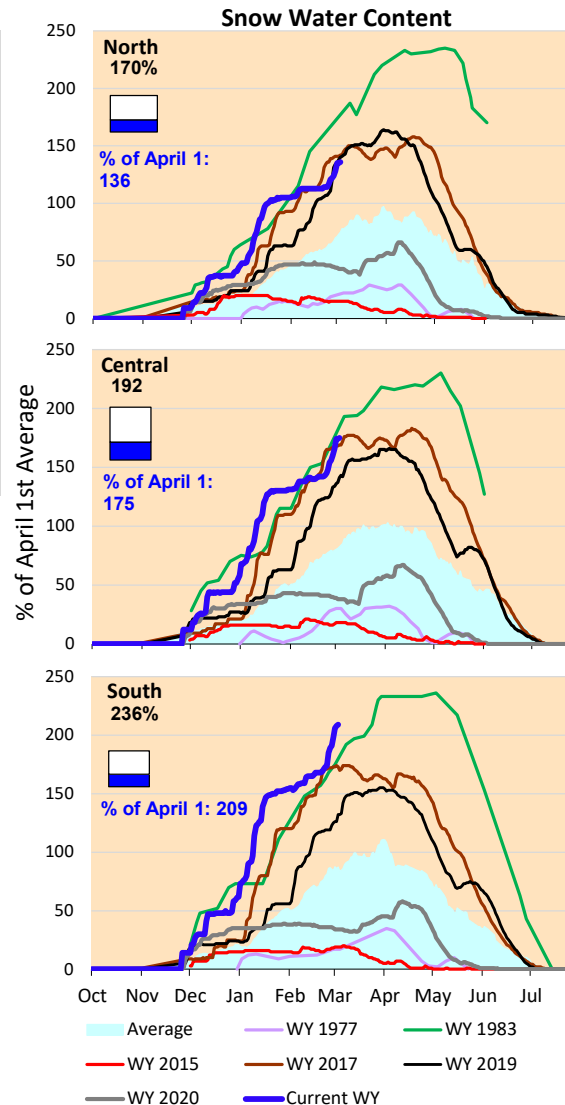
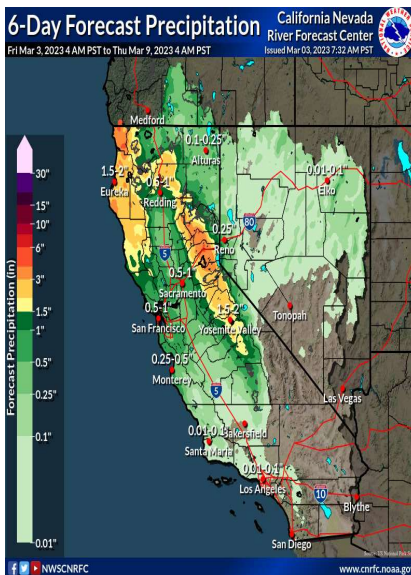


Some storms forecasted for Northern and Central California through next week. Cumulative precipitation for the Sierras and snow water content are above the average values for this time of year. Snow water content for the Sierras is considerably above average for this time of year. Actual runoff is higher than the historical average rates.

*Note: Percentages in each plot refers to percent of average for this date. When historic data is unavailable, Snow Water Content Bar plot is not shown. The percent of historic average for each SWC location differs slightly from CDEC's report due to small discrepancies in historical data.



6-Day Forecast Precipitation (inches)





Project Operations



3/3/2023

Delta outflow conditions continue to remain 'excess Delta conditions with restrictions'. Delta outflows and SAC and SJR inflows have increased as compared to last week. CVP SWP exports are higher than the last week's amounts. Salinity conditions in the South Delta remain favorable. Shasta and Folsom reservoir storage amounts remain below average levels for this time of year. The storage at Oroville is at the historic average level. All storage volumes increased from last week.

