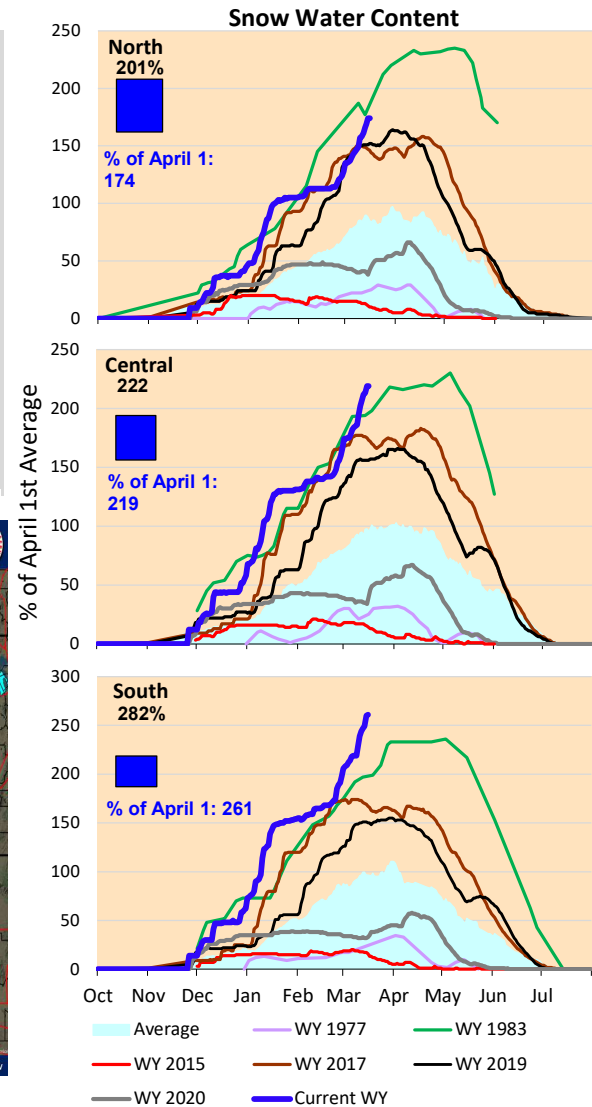
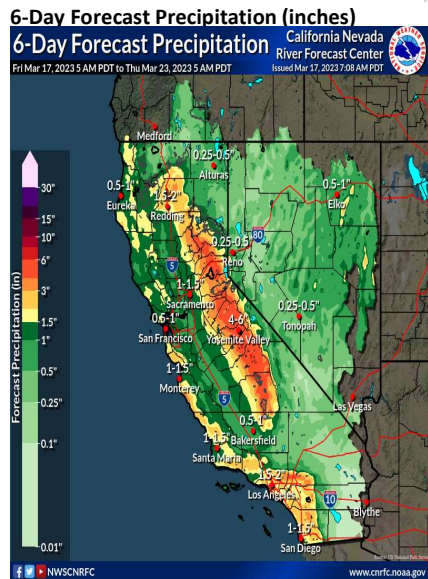


Additional rainfall is expected across the state through next week. Cumulative precipitation for the Sierras are above average value for this time of year. The snow water content is above the average values for this time of year. For the Central and South areas, snow water content is above the historic wet year (1983) for this time of year. Actual runoff is higher than the historical average rates.

\*Note: Percentages in each plot refers to percent of average for this date. When historic data is unavailable, Snow Water Content Bar plot is not shown. The percent of historic average for each SWC location differs slightly from CDEC's report due to small discrepancies in historical data.



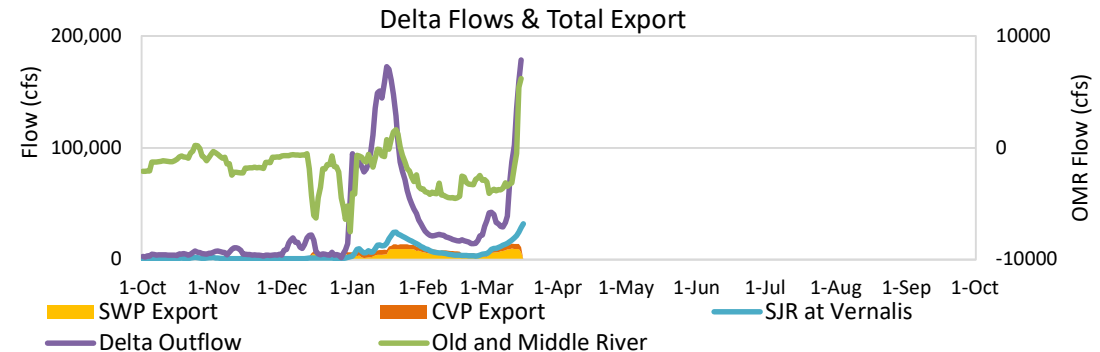


# Project Operations



3/17/2023

Delta outflow conditions are in excess. Delta outflows increased considerably as compared to last week, with a majority of this increase occurring in Sacramento River. Salinity conditions in the South Delta remain good, resulting in continuing high exports. The SWP share of San Luis Reservoir is nearly full and Article 21 Water is likely to be available next week. Shasta and Folsom reservoir storage amounts are close to average levels for this time of year. The storage at Oroville have increased above the historic average level and is resulting in flood control releases. All storage volumes increased from last week.



## Daily Average Flow

