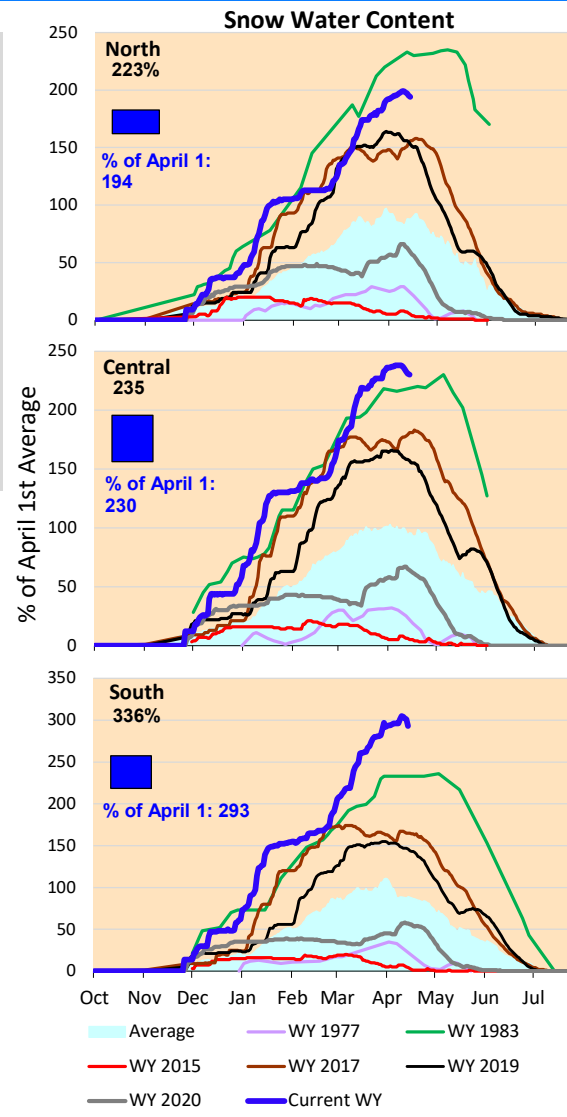
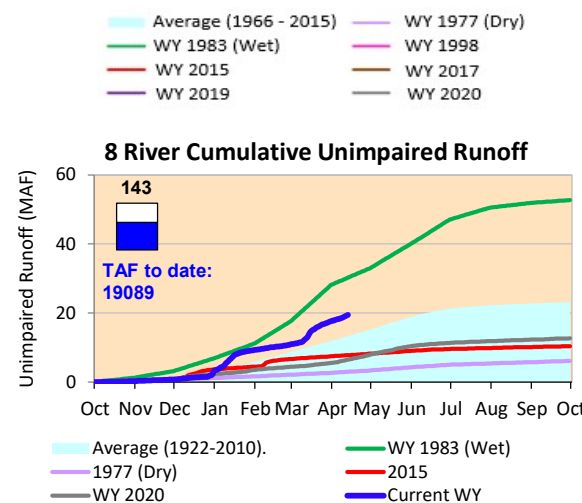
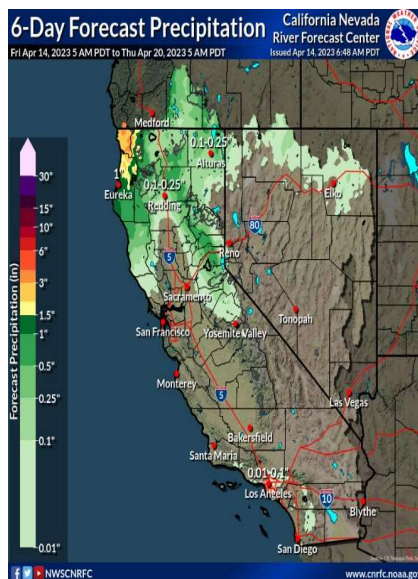


Minimal rainfall is expected only across Northern part of the state next week. Cumulative precipitation for the Sierras are above average value for this time of year. The snow water content is above the average values for this time of year. For the Central and South areas, snow water content is above average year (1983) for this time of year. Actual runoff is higher than the historical average rates.

*Note: Percentages in each plot refers to percent of average for this date. When historic data is unavailable, Snow Water Content Bar plot is not shown. The percent of historic average for each SWC location differs slightly from CDEC's report due to small

6-Day Forecast Precipitation (inches)



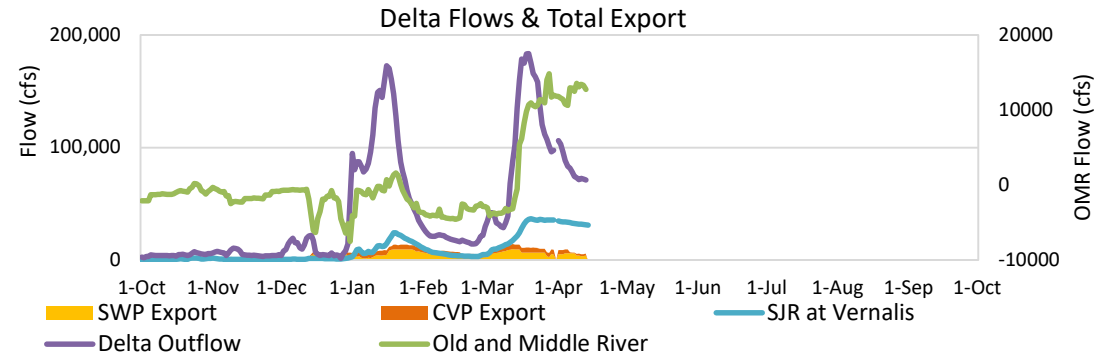


Project Operations



4/14/2023

Delta outflow conditions continue to be in excess. Delta outflows have decreased this week due to decreased flows in the Sacramento River and SJR flows. Salinity conditions in the South Delta remain excellent, with no water quality constraints on exports. Oroville, Shasta and Folsom reservoir storage amounts are close to average levels for this time of year. All storage volumes increased from last week.



Daily Average Flow

As reported on 4/12

