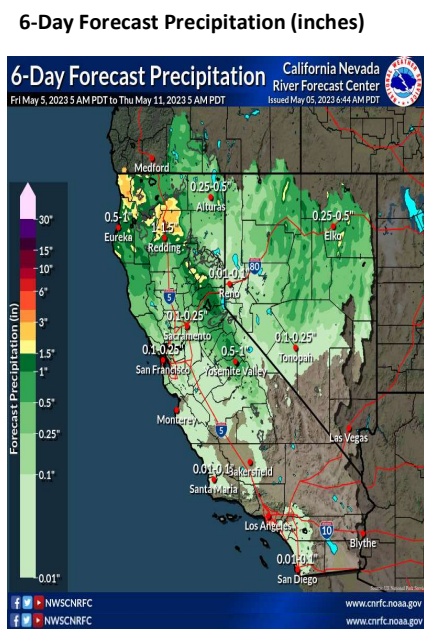
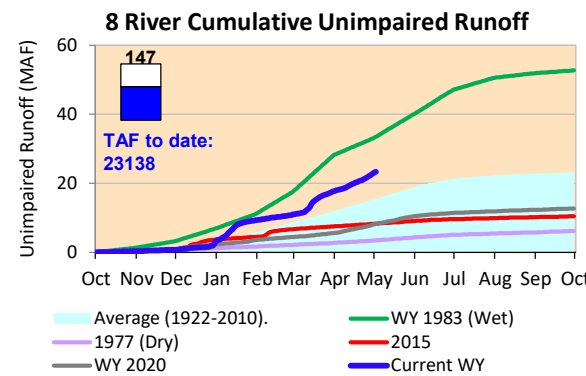
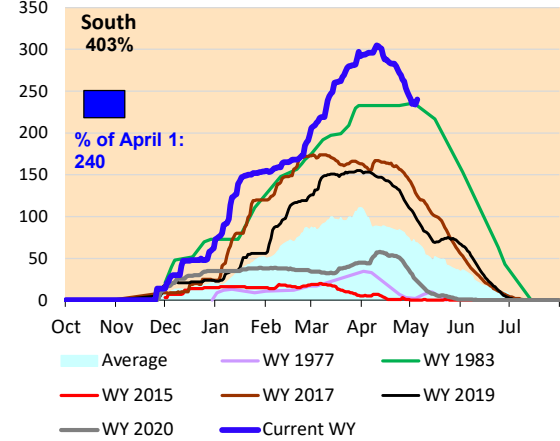
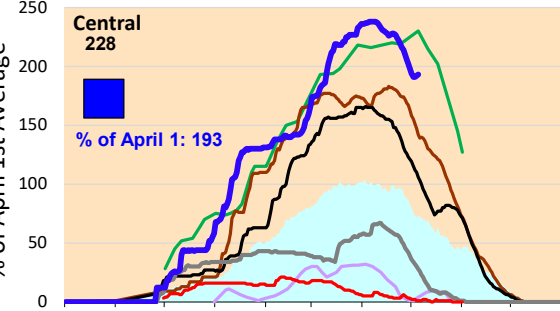
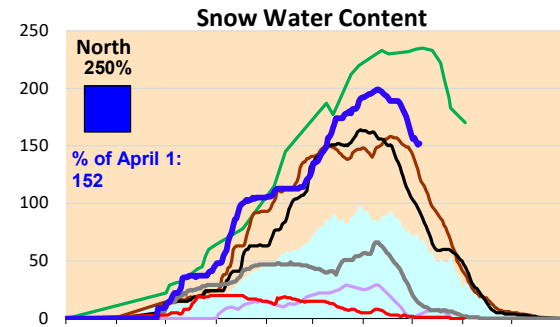


More rainfall is expected across much of the state next week. Cumulative precipitation for the Sierras are above average value for this time of year. The snow water content is far above the average values for this time of year and is on the decline. For the South area, snow water content is above wet year (1983) for this time of year. Actual runoff is higher than the historical average rates.

*Note: Percentages in each plot refers to percent of average for this date. When historic data is unavailable, Snow Water Content Bar plot is not shown. The percent of historic average for each SWC location differs slightly from CDEC's report due to small discrepancies in historical data.



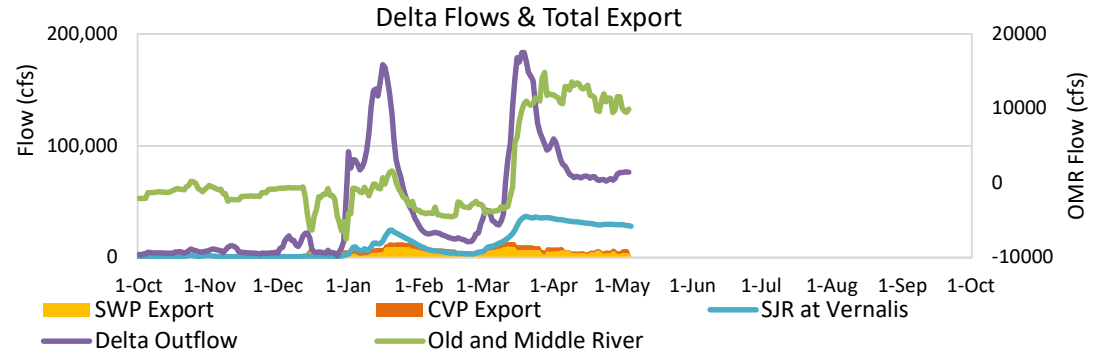


Project Operations



5/5/2023

Delta outflow conditions continue to be in excess. Delta outflows remain consistent to last week. Salinity conditions in the South Delta remain excellent, with no water quality constraints on exports. Folsom reservoir storage amounts is close to average levels for this time of year, while Oroville and Shasta are now above average. All storage volumes increased from last week with San Luis only dropping slightly.



Daily Average Flow

As reported on 5/4

