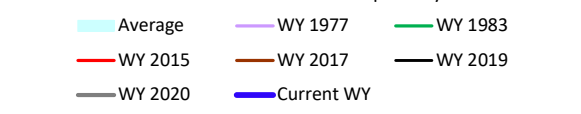
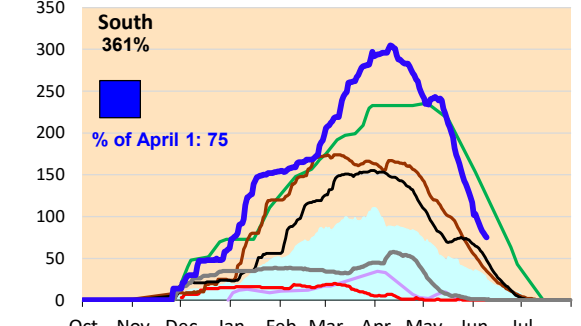
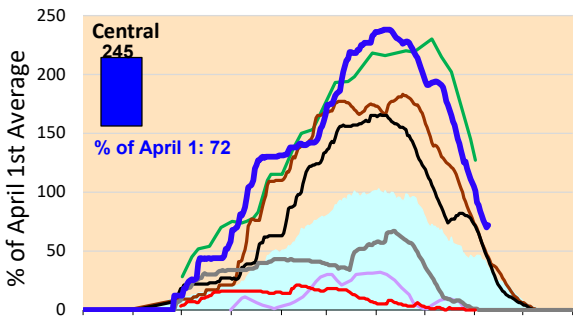
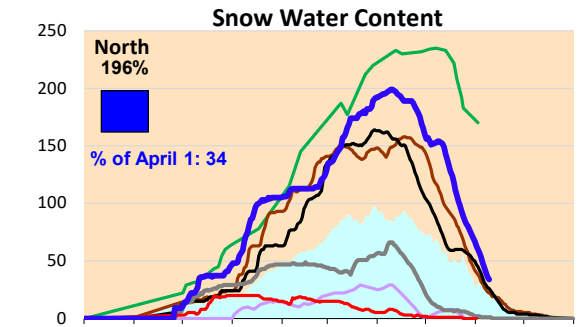
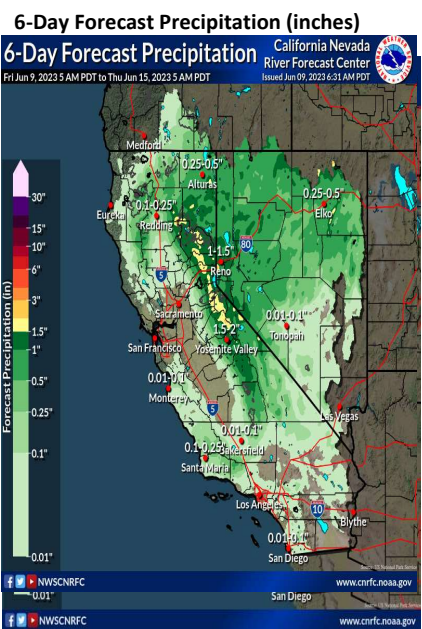
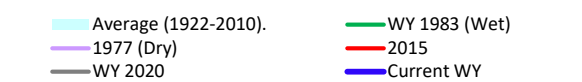
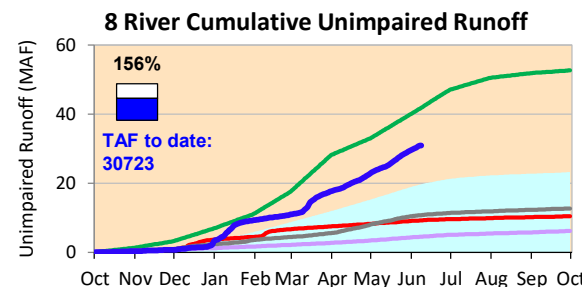
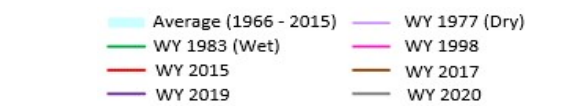


Small amounts of precipitation are forecasted for most of California through weekend, with more rainfall expected in the Central and Eastern Sierras. Cumulative precipitation for the Sierras are above average value for this time of year. The snow water content is far above the average values for this time of year and is on the decline. Actual runoff is higher than the historical average rates.

*Note: Percentages in each plot refers to percent of average for this date. When historic data is unavailable, Snow Water Content Bar plot is not shown. The percent of historic average for each SWC location differs slightly from CDEC's report due to small discrepancies in historical data.



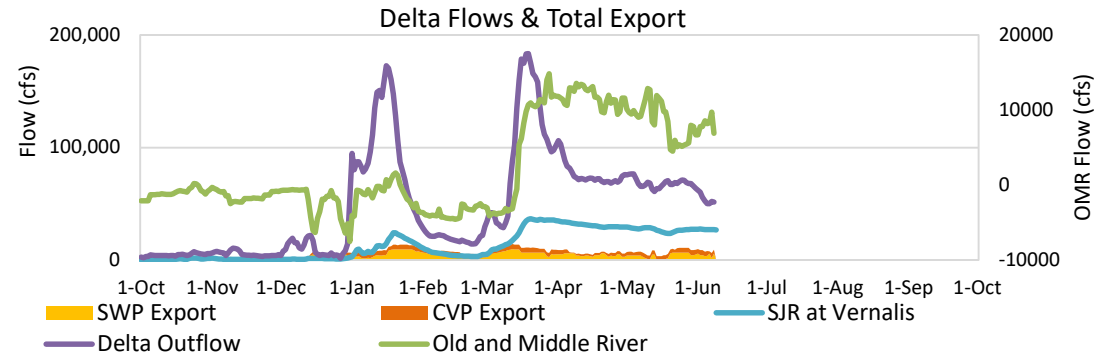


Project Operations



6/9/2023

Delta outflow conditions continue to be in excess. Delta outflows remain consistent with last week. Salinity conditions in the South Delta remain excellent, with no water quality constraints on exports. Folsom, Oroville and Shasta reservoirs storage amounts are above average levels for this time of year. Upstream storage volumes increased from last week with San Luis remaining full.



Daily Average Flow

As reported on 6/8

