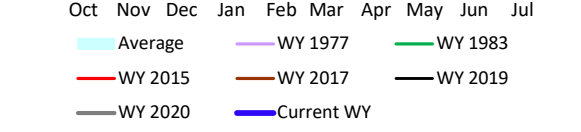
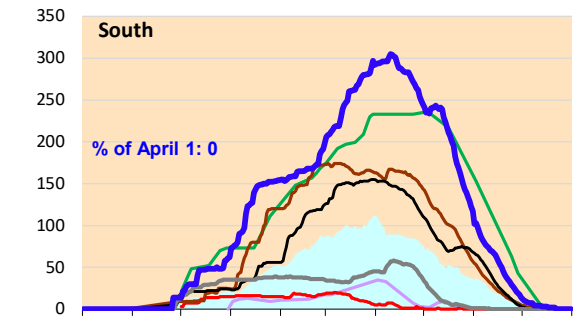
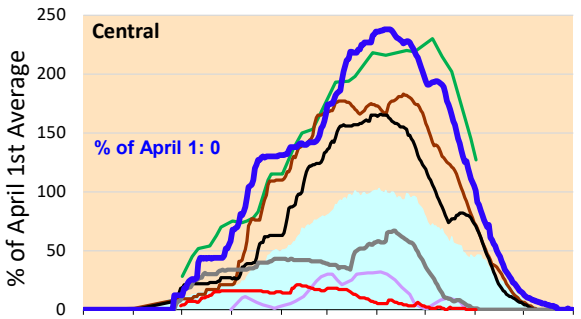
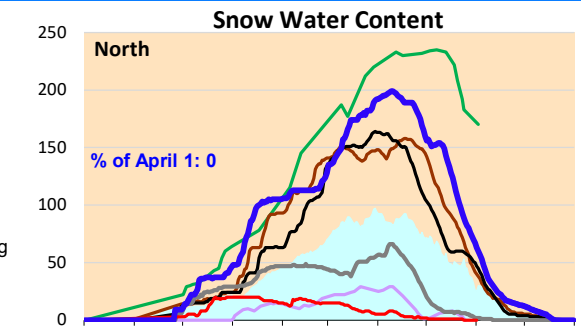
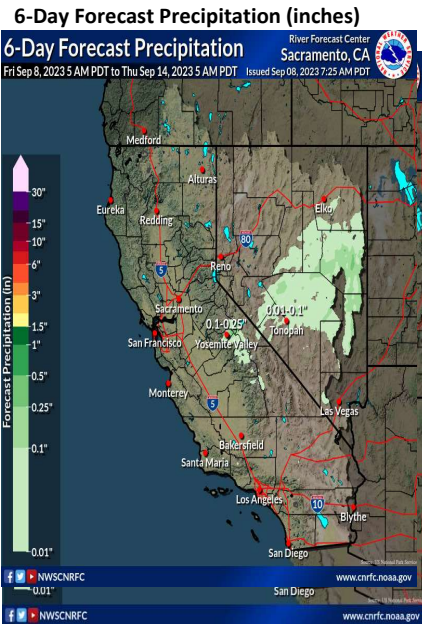
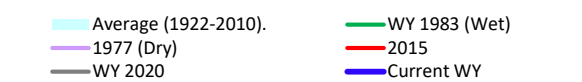
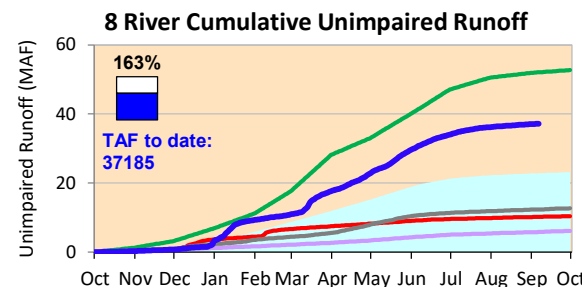
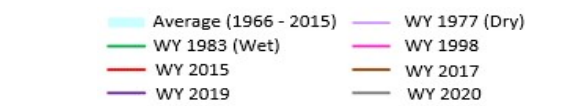


No precipitation is forecasted for California for the next week. Cumulative precipitation for the Sierras are above average value for this time of year. The snow water content has declined to 0%. Actual runoff is higher than the historical average rates.

*Note: Percentages in each plot refers to percent of average for this date. When historic data is unavailable, Snow Water Content Bar plot is not shown. The percent of historic average for each SWC location differs slightly from CDEC's report due to small discrepancies in historical data.

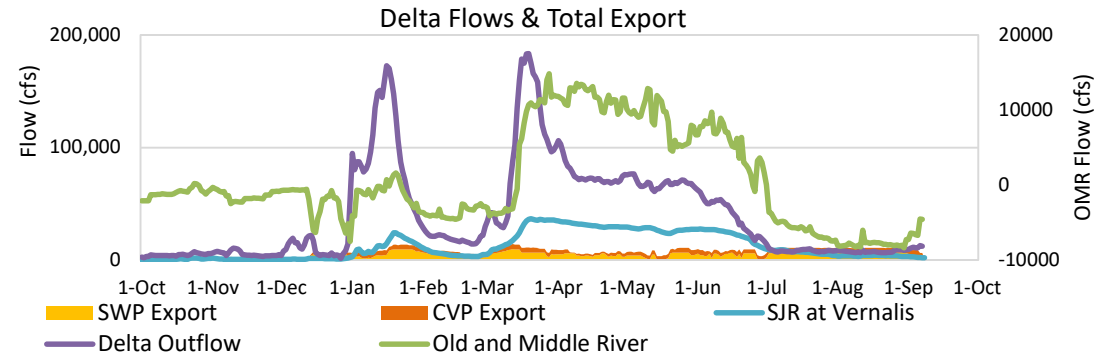




Project Operations

9/8/2023

Delta outflow conditions continue to remain 'balanced'. Delta inflow remain consistent to last week with an increase in outflows. Salinity conditions in the South Delta remain good, with no water quality constraints on exports. Folsom, Oroville and Shasta reservoirs storage amounts are above average average levels for this time of year. Upstream storage volumes decreased from last week with San Luis Reservoir also decreasing somewhat.



Daily Average Flow

As reported on 9/7

