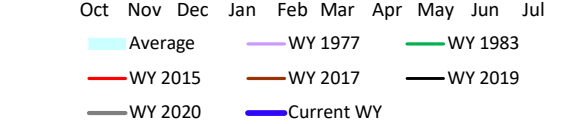
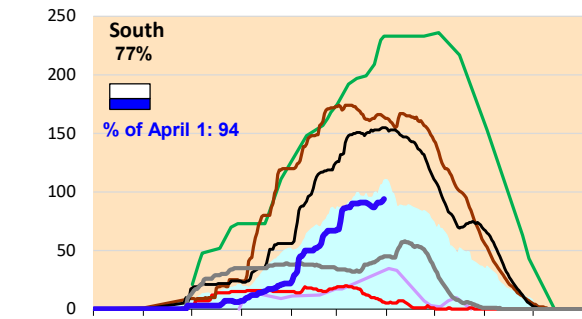
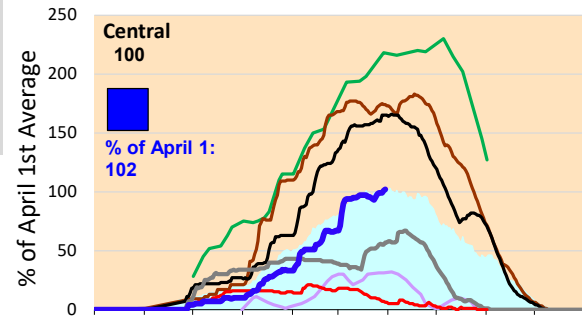
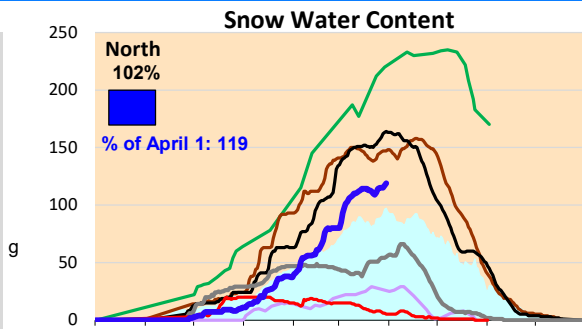
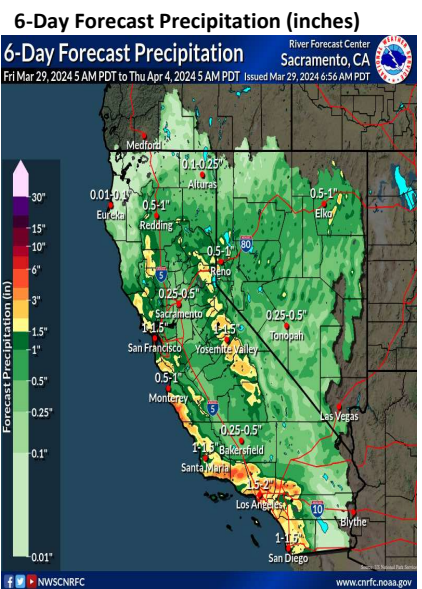


April is forecasted to start with some strong precipitation in the Central and South coasts, as well as the high Sierras next week. The snow water content started to decline but has increased again over the last two weeks across the Sierras. The North Sierra cumulative precipitation and snow water content are at and above average values for this time of the year. Snow water content in the Central and Southern Sierras, and actual runoff is similar to the historical average rates.

*Note: Percentages in each plot refers to percent of average for this date. When historic data is unavailable, Snow Water Content Bar plot is not shown. The percent of historic average for each SWC location differs



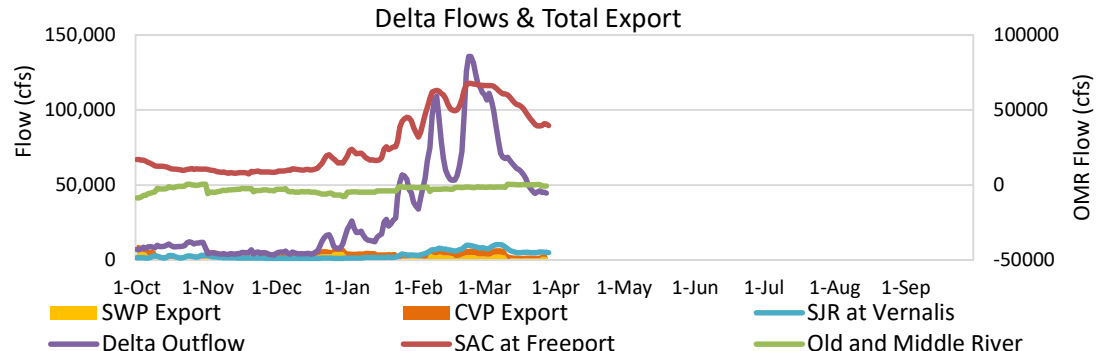


Project Operations



3/29/2024

Delta outflow conditions continue to remain 'excess Delta conditions with restriction' due to high Sacramento River inflow that has triggered a 2019 BiOp. Delta inflow and outflow have reduced slightly from last week. SWP exports increased and CVP exports are similar to last week. Old and Middle River flow restrictions are controlling export levels with Central Delta salinity conditions remaining excellent over the last several weeks. Reservoir storage amounts increased from last week, with all reservoir operations controlled by flood management requirements. Folsom reservoir storage is near average while Oroville and Shasta are above average levels for this time of year.



Daily Average Flow

Flow

As reported on 3/28

