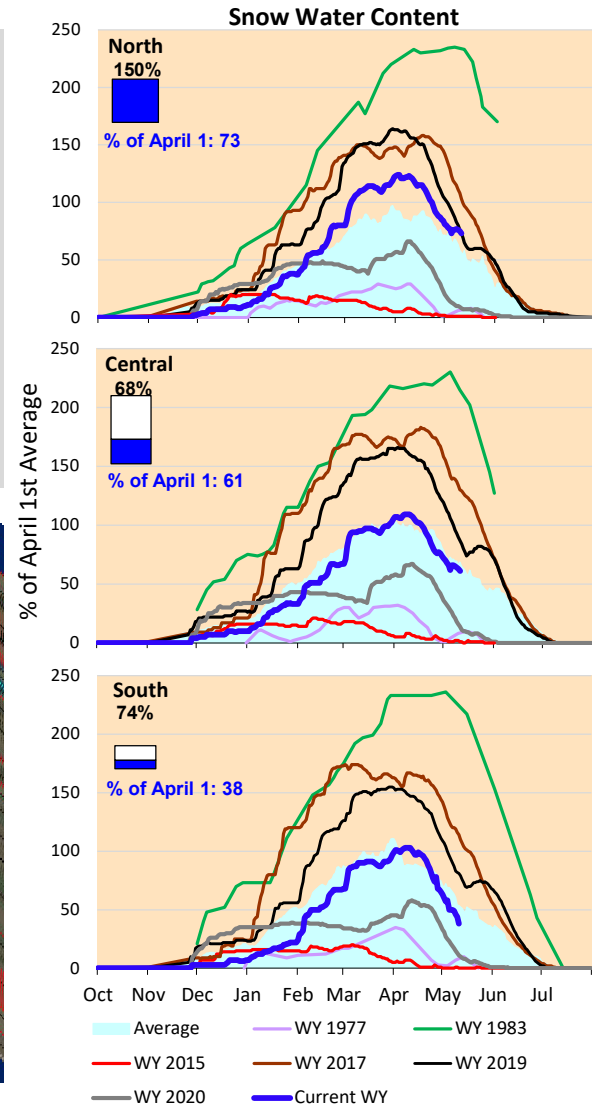
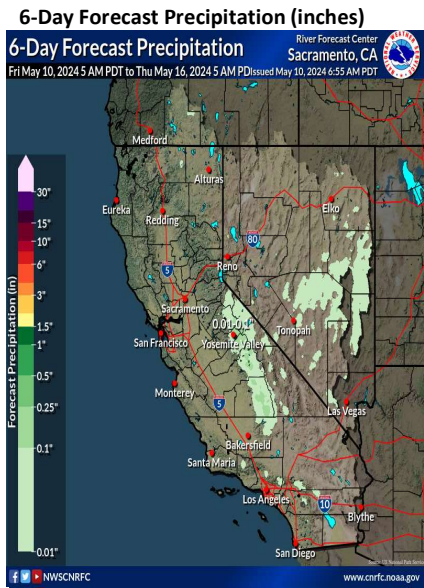
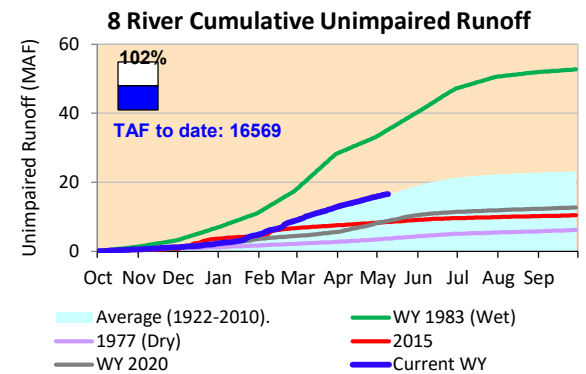


No precipitation is forecast in California for next week. The snow water content is continuing to decline. The North Sierra cumulative precipitation and snow water content are at and above average values for this time of the year. Snow water content in the Central and Southern Sierras, and actual runoff is similar to the historical average rates.

\*Note: Percentages in each plot refers to percent of average for this date. When historic data is unavailable, Snow Water Content Bar plot is not shown. The percent of historic average for each SWC location differs slightly from CDEC's report due to small discrepancies in historical data.



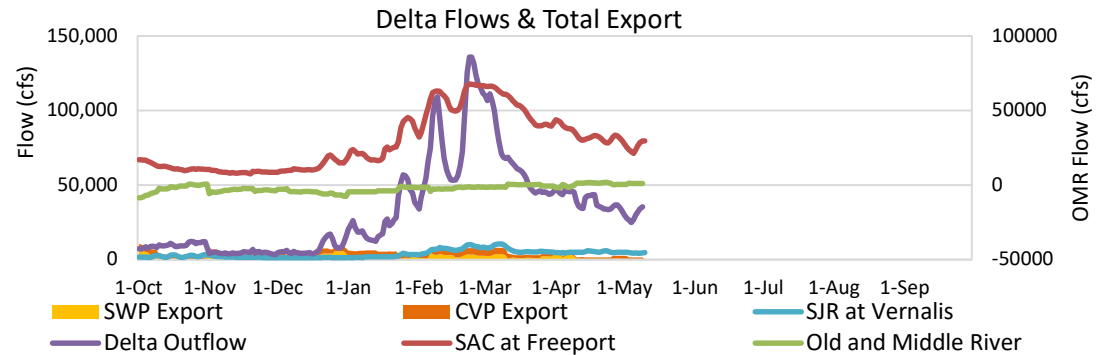


# Project Operations



5/10/2024

Delta outflow conditions continue to remain 'excess Delta conditions with restriction' due to the April-May OCAP Salmonid BO restrictions for San Joaquin River inflows. Delta inflow and outflow remain similar to the last week. SWP and CVP exports remained similar as compared to last week. The San Joaquin River Inflow/Outflow ratio is controlling with Central Delta salinity conditions remaining excellent. Reservoir storage amounts increased from last week, with all reservoir operations controlled by flood management requirements. Oroville Reservoir is full, and Folsom and Shasta reservoirs are above average levels for this time of year.



## Daily Average

### Flow

As reported on 5/9

